

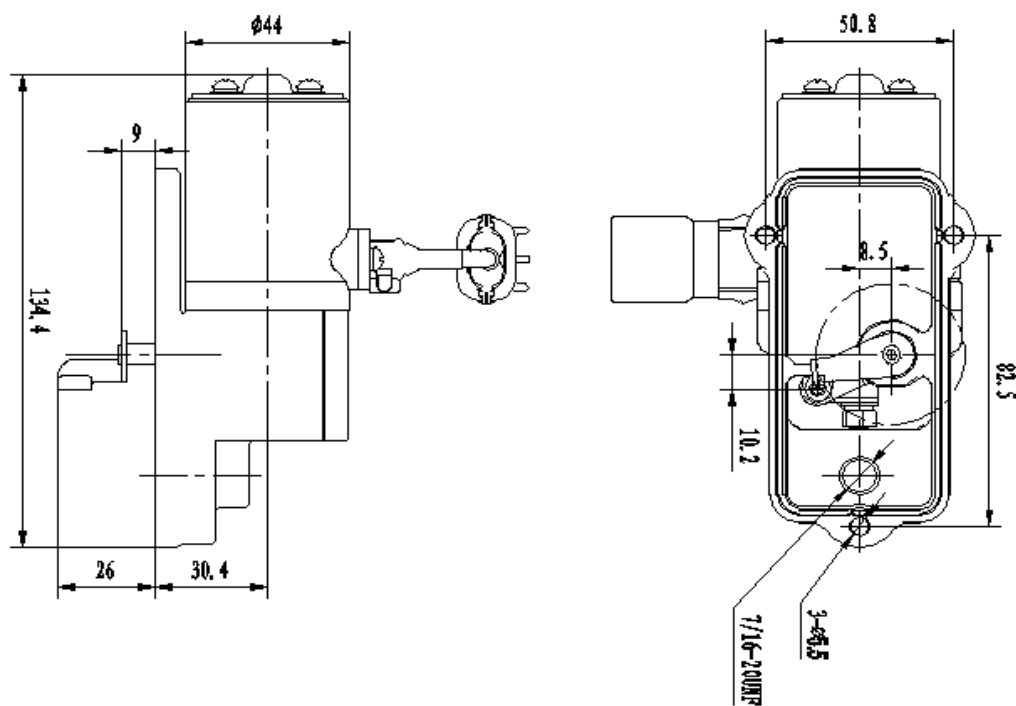
A100C-W ELECTRONIC GOVERNOR



The electromagnetic actuator is the actuator of the electric control system.

Basic characteristics

- ☑ WORKING VOLTAGE: DC12V/DC24V
- ☑ WORKING TORQUE: 20N
- ☑ WORKING ANGLE: 25°
- ☑ AMBIENT TEMP: -40°C ~ +95°C
- ☑ RELATIVE HUMIDITY: < 95%



The outline and installing size of the A100C-W electromagnetic actuator